

# Lift, jack and stack



- Durable polyethylene construction
- Tough and robust
- Frost-resistant to -30°C
- Easy to handle with pallet jack and fork lift
- Flat top and raised-lip versions available

# Tough Pallets



Pallets and Containers

Crafted from durable, hard-wearing polyethylene, SÆPLAST pallets are the ideal solution for withstanding the harsh conditions, rough handling, extremes of temperature and frequent wash-down sessions which characterize life in food processing plants and warehouses.

Flexible in design, long-lasting, frost-resistant and easy to clean, SÆPLAST pallets are the logical, economic replacement for outdated wooden or more brittle injection-moulded models.

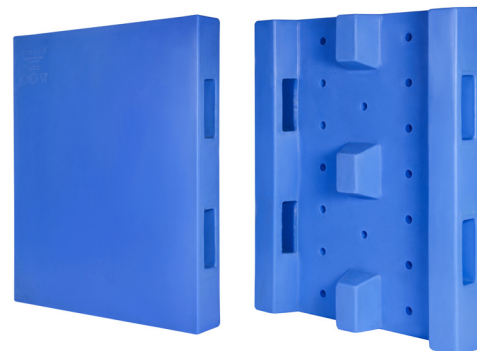
Temperature tolerances range from -30°C to +60°C. For cleaning max. 70°C.

Our pallets are ideal for storage and transportation. They are easily handled by pallet jack or forklift. In addition, they are light and easy to stack by hand.

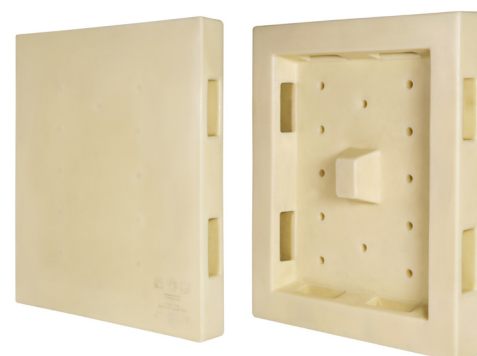
SÆPLAST pallets come in a variety of sizes and include numerous features. We offer our clients pallets with or without raised lip and a variety of surface designs. The pallets can also be specially reinforced for additional capacity load requirements upon request.

We include a standard range of features, such as an imprinted serial number for ready product identification and traceability of your product.

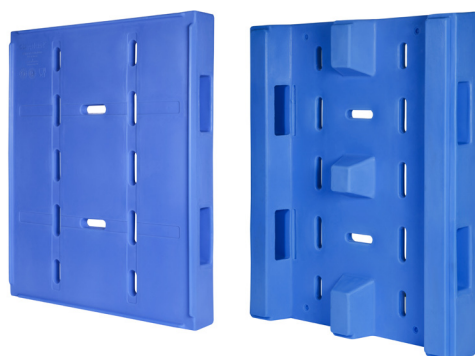
Consult with a SÆPLAST specialist to identify which pallet best suits your needs.



**PUR** SÆPLAST FPP Pallet 2S



**PUR** SÆPLAST FPP Pallet 4S



**PUR** SÆPLAST FVP Pallet 2S

## Size and load capacity of pallets

Type	Dimensions (cm)			Weight	Load capacity (kg)	
	L	W	H	KG	Static	Racking
SÆPLAST FVP Pallet 2S	121	100	15	25	3000	1000
SÆPLAST FPP Pallet 2S	122	100	16.5	21	3000	1000
SÆPLAST FPP Pallet 4S	123	100	15	21	3000	1000

*SÆPLAST products are constructed from EU/FDA approved food-grade materials. Dimensions and weights are +/- 2%*



Pallets and Containers

SÆPLAST ASIA – PART OF RPC GROUP • HONG KONG • TAICANG • Mainland China Tel: +(86) 512 5320 0633

www.saeplast.com • asia@promens.com

